



# St. Edmund's Elementary School

## Communicable Disease Plan

Revised August 28, 2023

Schools support students in developing their potential and acquiring the knowledge, skills and abilities they need for lifelong success. In-person learning, is a part of a student's education, provides the opportunity for peer engagement, which supports social and emotional development as well as overall wellness. It also provides many students access to programs and services that are integral to their overall health and well-being.

Based on guidance from the BC Centre for Disease Control and experience to date within B.C. and other jurisdictions showing schools as low-risk sites for COVID-19 transmission, even with increased risk of COVID-19 in some communities, K-12 students can participate in full-time, in-class instruction in accordance with current public health guidelines for schools. (Excerpt taken from *Provincial COVID-19 Communicable Disease Guidelines for K-12 Settings*)

This Communicable Disease Plan for St. Edmund's School was created in consultation with the CISVA Superintendent's Office, the CISVAAA, St. Edmund's School administration and staff. The guidelines contained herein are intended to support St. Edmund's School staff, students, parents, caregivers, administrators, and community members to:

- Be informed about communicable disease measures at St. Edmund's School and how they support a safe school environment;
- Understand their roles and responsibilities in maintaining and promoting a safe and healthy school.

This document was created with guidance from the following documents:

- BCCDC [Public Health Communicable Disease Guidance for K-12 Schools](#),
- [Provincial Communicable Disease Guidelines for K-12 Schools](#)

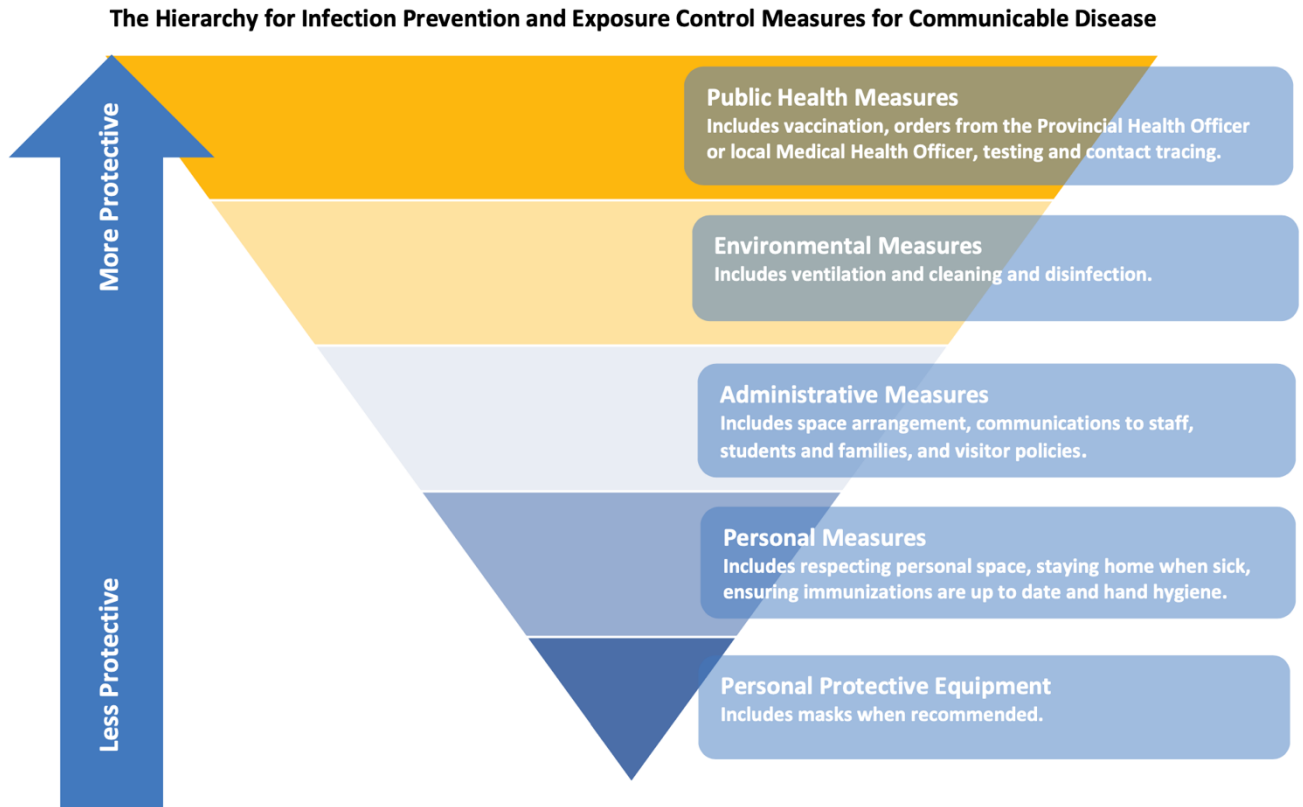
### **STEP 1: UNDERSTAND THE RISK**

Preventing communicable disease involves taking ongoing measures to reduce the risk for communicable disease transmission in school. Additional measures will be implemented when advised to do so by Public Health during periods of elevated risk. The level of risk of certain communicable diseases, including COVID-19, may increase from time to time or on a seasonal basis.



# St. Edmund's Elementary School Communicable Disease Plan

Revised August 28, 2023



- The school principal is responsible for regularly monitoring and reviewing the communicable disease-related information that is provided by our regional medical health officer (Vancouver Coastal) and the Provincial Health Officer. This includes all of the orders, guidelines, notices, and recommendations that are issued by them. In addition, we follow the guidelines that are provided by our Superintendent. This information is regularly communicated to staff to understand and minimize risk for communicable disease transmission in our school.

## **STEP 2: IMPLEMENT MEASURES, PRACTICES, AND POLICIES TO REDUCE THE RISK**

Ongoing measures – maintain at all times:



# St. Edmund's Elementary School

## Communicable Disease Plan

Revised August 28, 2023

**Implement policies to support staff who have symptoms of communicable disease so they can avoid being in the workplace when sick.**

- Policies are implemented to support staff who have symptoms of communicable disease so they can avoid being in the workplace when sick.
- A student absentee policy is also available on pg. 25 of the St. Edmund's Parent Handbook, and reminders of procedures for "when your child is sick..." are printed in the monthly school newsletter.
- Additional considerations may be implemented by the principal, PEC, health and safety committee, pastor, etc.
- Said policies are reviewed regularly in staff meetings. Staff, students, and parents are trained in school policies and procedures. Staff gatherings (staff meetings/professional development activities) will occur virtually.
- Measures are in place, where feasible, to minimize the crowding and to use all space available to spread people out.
- Schools can return to classroom and learning environment configurations and activities that best meet learner needs and preferred educational approaches. We will still consider strategies to create space between people and to support students and staff using a trauma-informed approach.
- Whole school recess and lunch play periods times will resume. Primary students will play on the lower field while intermediate students will play in the upper field.
- School assemblies are permitted and may be held in person. Students will be spaced accordingly to maximize space.
- The entire school will celebrate Mass in the Church. Students will be spaced accordingly to maximize space.
- The decision to wear a mask or face covering is a personal choice for everyone. This choice should be supported and treated with respect.
- Extra-curricular activities, including sports will continue. Games may still be played according to the guidelines set from CISVA Elementary Athletic Commission.

**Provide hand-hygiene facilities and appropriate supplies. Use policies and signage to remind students & staff to wash their hands and to cover coughs and sneezes.**

### **Handwashing:**

Wash hands with plain soap and water for at least 20 seconds. Antibacterial soap is not needed.



# St. Edmund's Elementary School

## Communicable Disease Plan

Revised August 28, 2023

- If sinks are not available (e.g., students and staff are outdoors), use alcohol-based hand rub containing at least 60% alcohol.
  - If hands are visibly soiled, alcohol-based hand rub may not be effective at eliminating respiratory viruses. Soap and water are preferred when hands are visibly dirty.
  - Incorporate additional hand hygiene opportunities into the daily schedule.
- Staff have posted [handwashing posters](#) by the classroom sinks and administration has posted posters in all bathrooms and above staff room and kitchen sinks.

When Students Should Perform Hand Hygiene:	When Staff Should Perform Hand Hygiene:
<ul style="list-style-type: none"><li>• When they arrive at school.</li><li>• Before and after any breaks (e.g., recess, lunch).</li><li>• Before and after eating and drinking (excluding drinks kept at a student's desk or locker).</li><li>• Before and after using an indoor learning space used by multiple classes (e.g. the gym, music room, science lab, etc.).</li><li>• After using the toilet.</li><li>• After sneezing or coughing into hands.</li><li>• Whenever hands are visibly dirty.</li></ul>	<ul style="list-style-type: none"><li>• When they arrive at school.</li><li>• Before and after any breaks (e.g. recess, lunch).</li><li>• Before and after eating and drinking.</li><li>• Before and after handling food or assisting students with eating.</li><li>• Before and after giving medication to a student or self.</li><li>• After using the toilet.</li><li>• After contact with body fluids (i.e., runny noses, spit, vomit, blood).</li><li>• After cleaning tasks.</li><li>• After removing gloves.</li><li>• After handling garbage.</li><li>• Whenever hands are visibly dirty.</li></ul>

### Respiratory Etiquette:

Students and staff should:

- Cough or sneeze into their elbow sleeve or a tissue.
- Throw away used tissues and immediately perform hand hygiene.
- Refrain from touching their eyes, nose or mouth with unwashed hands.
- Refrain from sharing any food, drinks, unwashed utensils, cigarettes, or vaping devices.



# St. Edmund's Elementary School

## Communicable Disease Plan

Revised August 28, 2023

- Parents and staff can teach and reinforce these practices amongst students.
- Staff are encouraged to teach and reinforce both handwashing and respiratory etiquette regularly throughout the day
- Teachers have posted posters in all classrooms. Administrators have posted in public areas.

**Maintain a Clean Environment through routine cleaning processes that are appropriate for school practices.**

### Cleaning Practices:

- We have reviewed the information on cleaning and disinfecting surfaces. Cleaning supplies are provided for every classroom and common room.
- Our school has enough handwashing or sanitizing stations on site for all our staff and students.
- We have policies that specify when staff and students must wash their hands and we have communicated good hygiene practices to parents, students and staff. Instructional posters are posted in each classroom, washroom, and common room. We have implemented cleaning protocols for all common areas and surfaces.
- Workers who are cleaning have adequate training and materials.
- Hygiene Posters are posted in all classrooms and common areas.
- [Cleaning posters](#) are posted in janitorial rooms.
- Cleaning staff are provided with substances for cleaning and disinfecting.
- Cleaning staff are provided with gloves.
- Cleaning staff have been instructed to wash their hands after cleaning.
- Frequently touched surfaces are disinfected at least once a day (doorknobs, toilet handles, faucets, tables, desks, chairs), as well as a deep clean at the end of the day by the custodian.
- Classroom teachers are responsible for disinfecting visibly dirty surfaces in their classrooms such as desks, tables and sinks during the course of the day.
- Use commercial-grade cleaning products and follow the label
- Classroom teachers are provided with cleaning products for their classrooms.
- All cleaning products must be kept out of reach of their students.



# St. Edmund's Elementary School

## Communicable Disease Plan

Revised August 28, 2023

- There is no evidence that the virus can be spread by paper products. Paper and paper-covered books can be given to students. Students can submit paper assignments to teachers.
- Custodian will empty garbage once a day
- Staff will wear disposable gloves when cleaning blood or body fluids (e.g., runny nose, vomit, stool, urine). Wash hands before wearing and after removing gloves.
- Clean and disinfect first aid room cot prior to use and after it is used or soiled. Paper liner will be disposed of after the use of each student.
- Student supplies and equipment: Parents must label all personal items coming from home including water bottles, lunch kits and containers, backpacks, clothing and all school supplies. Students are encouraged to bring labeled water bottles to school.

### **Ventilation and Air Circulation:**

- Windows are opened in all classrooms and staff areas each day, every day, to ensure effective air circulation. Portable air purifiers have been provided for all classrooms and the library.
- Air purifier filters are cleaned/replaced on a regular basis by school custodian.
- Air system has been upgraded to MERV 13 filters and is maintained on a regular basis.
- Custodians are familiar with the document '[Prevent the spread of communicable disease: ventilation and circulation](#)'.
- Principal does a walk-through regularly to ensure standards are being met.

### **Masks**

- We understand the limitations of masks to protect the wearer from respiratory droplets.
- We have trained workers in the proper use of masks.
- The decision to wear a mask or face covering is a personal choice both for students and staff. A person's personal choice is to be supported and respected.
- We will continue to have non-medical masks on hand for those who have forgotten theirs but would like to wear one, or for those who become ill at school.

### **Additional Measures if/when Needed**

When a medical or provincial health officer provides guidance/new information about a risk or how to reduce it, our health and safety team will be contacted, assembled, and meet with



# St. Edmund's Elementary School

## Communicable Disease Plan

Revised August 28, 2023

administration/health officials to discuss risk and establish plans and steps for response and implementation.

Depending on the severity of risk, formal meeting with stakeholder groups will be conducted. Consultation with the Superintendent's office will occur as needed. Plans will be documented.

If needed, a report will be created to outline strategies for additional measures. Reporting out will occur with stakeholders: PEC, staff, parents, student, parish in a timely manner.

### **STEP 3 – COMMUNICATE MEASURES, PRACTICES, POLICIES**

To ensure everyone that enters St. Edmund's School receives information about our measures, practices, and policies we have instituted the following:

- Provided all employees with information of policy 310 (Employee Leaves of Absence) and local school policies, re: staying home when sick.
- Posted signage on entry doors and throughout the interior of the school to support the measures we have in place
- Provided information to make sure all stakeholders are knowledgeable about the practices that are in place at our school. Parent meetings at the beginning of the year, email communication, classroom blogs, etc.
- All workers are aware of the policy for staying home when sick.
- We have posted signage in the school, including effective hygiene practices.
- We have posted signage at the main entrances indicating who is restricted from entering the premises, including visitors and workers with communicable disease symptoms.
- Administrators have been trained on monitoring workers and the workplace to ensure policies and procedures are being followed.
- Communication with staff is conducted through on-site meetings, emails, Whatsapp group chat messages, staff meetings.
- Train staff on workplace policies and procedures:
  - Administration will field questions and concerns about the Communicable Disease Plan and adjust if needed
  - Changes/adjustments to the Communicable Disease Plan will be updated accordingly and communicated to all stakeholders.
  - Communicable Disease Plan is posted to school website.
- All workers received information about staying home when sick



# St. Edmund's Elementary School

## Communicable Disease Plan

Revised August 28, 2023

- All staff are required to complete a daily health check to assess for symptoms of communicable disease.
- Administration will monitor safety measures in the school.
- Administration will send staff regular emails regarding updates to policies, procedures, ministry documents or developments from Vancouver Coastal Health

### **STEP 4 – MONITOR YOUR WORKPLACE AND UPDATE PLANS AS NECESSARY**

- Things may change as school gets up and running. New areas of concern will be monitored and identified and adjusted as necessary.
- Procedures and policies will be updated as necessary.
- Protocol is in place so workers know who to go to with health and safety concerns.
- When resolving safety issues, proper authorities (MoE, Provincial Health Officer, Worksafe) will be consulted.
- Joint Occupational Health & Safety meet regularly and are involved in identifying and resolving worker health and safety issues.
- Administration will review Communicable Disease Plan regularly and update as needed.